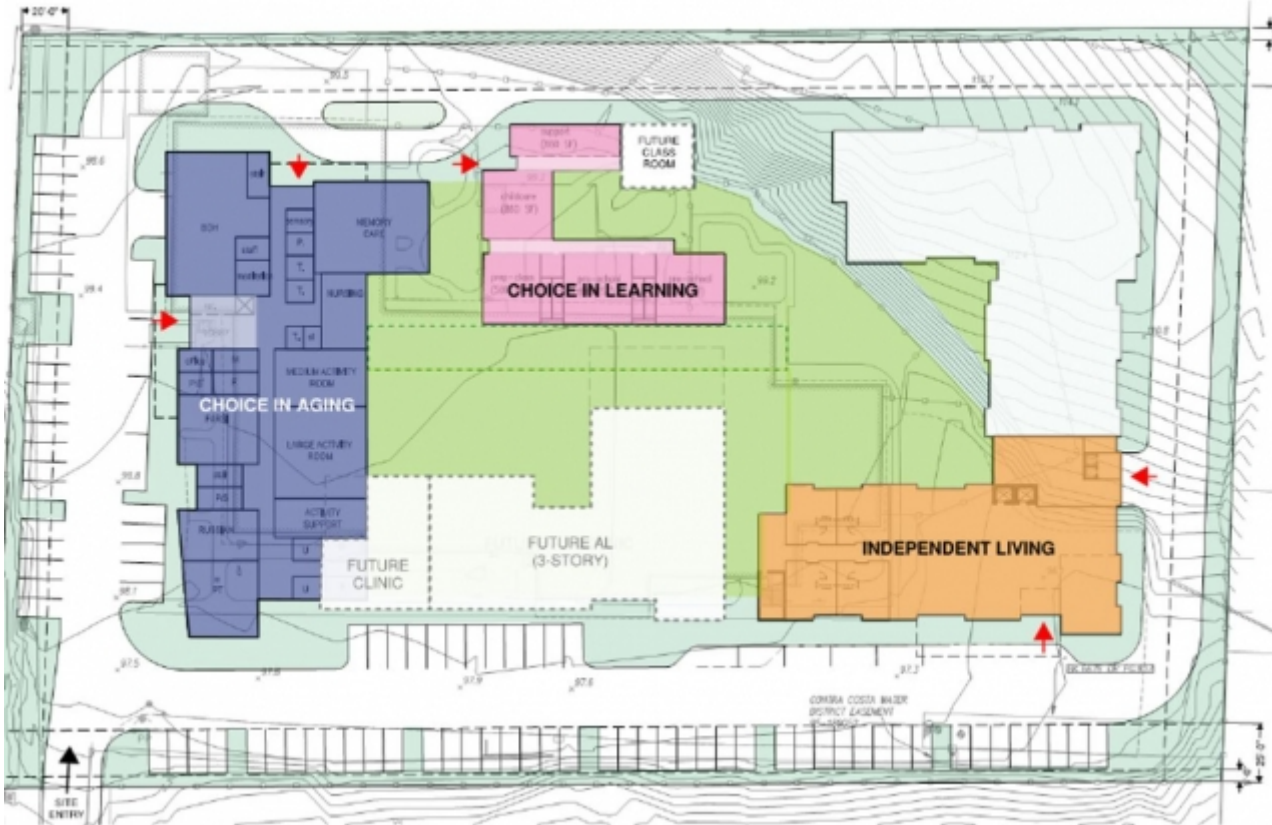




Published on SAHA (<https://www.sahahomes.org>)

Home > Choice in Aging Redevelopment (the "Aging in Place Campus?")



Choice in Aging Redevelopment (the "Aging in Place Campus?")

490 Golf Club Road, Pleasant Hill | Map ^[1]
Coming Soon

In partnership with Choice in Aging ^[2](CiA), SAHA will be redeveloping CiA's 4-acre site. CiA plans to rebuild their CiA current program space and Choice in Learning preschool ^[3], and SAHA will build 82 units of affordable senior housing.

CiA was established in 1949 and serves Contra Costa, Napa, and Solano Counties. CiA provides Adult Day Health Care services for frail adults, elders, and persons with Alzheimer's disease and related dementias. This program is designed for loved ones to engage in a safe and supportive environment during the day, while still living at home with their family members. CiA also offers information and referral resources to the local community, as well as support services to caregivers and family members of frail elders and persons with

Alzheimer's and related dementias. The new program space will serve additional seniors in the Adult Day Health Care Program, expanded physical and occupational therapy rooms, and new offices, staff lounges, and outdoor gardens. CiA's current building was constructed in 1949, and is in need of major repairs.

In order to accomplish this 4-acre redevelopment, the project proposes subdividing the current site into three parcels: Choice in Aging/Choice in Learning, SAHA Affordable Housing, and a Phase 2 Future Development parcel. In the interim, a large community garden is planned where future development may be built.

SAHA will be building and managing the multi-story building, which will provide 81 one-bedroom units of affordable senior housing, and one two-bedroom manager's unit for a total of 82 units. The building will have on-site amenities such as a community room, services and property management offices, outdoor space, two elevators, trash chutes, and a large laundry room.

- [View Property Gallery](#) ^[4]
- [Print This Page](#) ^[5]

Estimated Completion

February, 2021

Income Level

30-60% AMI

Resident Population

- Seniors

Architect

Perkins Eastman

Property Manager

SAHA PM

Services Coordinator

SAHA

Source URL: <https://www.sahahomes.org/properties/choice-aging-redevelopment>

Links

[1] <http://maps.google.com/maps?q=490 Golf Club Road, Pleasant Hill, CA>

[2] <https://choiceinaging.org/>

[3] <https://cilmontessori.org/>

[4] <https://www.sahahomes.org/%3Finline%3Dtrue%26scrollbars%3Dno%23node-images-lightbox>

[5] <https://www.sahahomes.org/printpdf/915>